

The Utah State Council invites you to attend.....

**2017 ROCKY MOUNTAIN REGIONAL ROUNDUP**

**August 11 - 13, 2017**

**SUNSET LODGE @**

**Hideaway Valley Lodge**

**(The Lodge is located in Hideaway Valley between Indianola and Fairview, Utah) See map and directions on back.**

We will be using Sunset Lodge it has three levels (no elevator but has a luggage lift). The kitchen and meeting room area are located on the entry level. Sleeps 32 (no bunk beds) seven bedrooms and five bathrooms. All towels and bedding are provided (bring your own toiletries).

Make check payable to Utah State Council of ESA.

Send Registration to:

Judy Ann Scott

P O Box 84

Green River, Utah 84525

For Information contact Judy

435-564-3366

pignut@etv.net

---

**REGISTRATION FORM**

**Registration Deadline: July 21, 2017**

**Registration: \$120.00 per person, \$130.00 late.**

**Includes 5 meals and 2 nights lodging**

Name: \_\_\_\_\_ State: \_\_\_\_\_

Address: \_\_\_\_\_

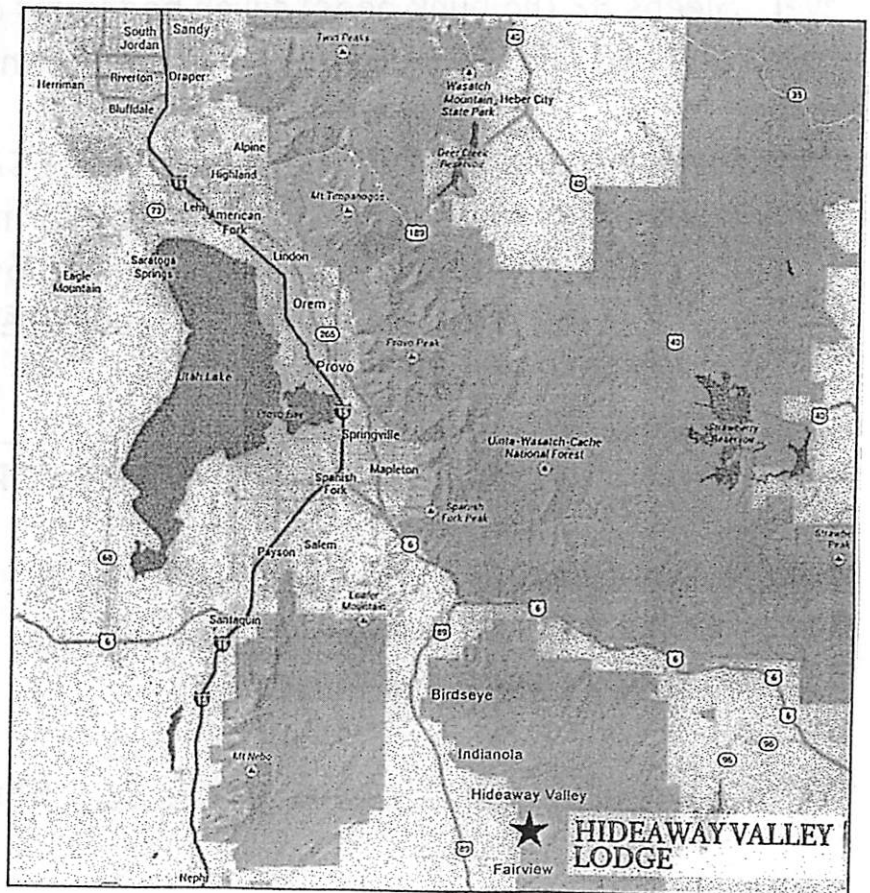
Phone No.: \_\_\_\_\_ Email: \_\_\_\_\_

Special Dietary Needs: \_\_\_\_\_

## DIRECTIONS:

If you are coming from the north on I-15, take the Exit 257B-Spanish Fork/Price/Main St Exit. You make a left off the Exit and proceed on US 6 into Spanish Fork canyon (approx. 15 mi) Then make a right turn onto US 89 \*\*south for 19 miles. Make a left at Hideaway Valley (sign is small, but there is a Fire Department there at the turn). Follow road straight ahead until it dead-ends onto private property, then make a sharp left. Follow that road and stay right until you see Teepee Ranch on the left side of the road. Make a sharp right (across from Teepee Ranch) and go up the hill until you follow it all the way to Hideaway Valley Retreat. Look for Sunset Lodge.

If you are coming from the south on I-70, take Exit 157 (just West of Green River), merging onto US-6/ US-191 North toward Price/Salt Lake City (approx. 113 mi). Then turn left onto US-89 \*\* (see directions above @ \*\*) and follow.



<http://www.hideawayvalleylodge.com>(click on Sunset Lodge)